

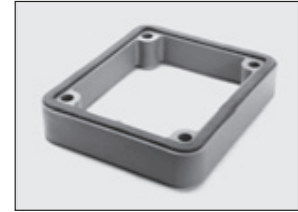
NEMA/EEMAC Type 4, 4X Combiester Series Accessories

DEPTH FLANGE



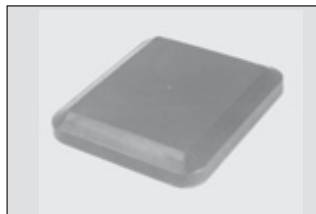
Part #	For Enclosures	Increases Depth
FD-2736	E-2736	62.5mm 2.5 inches
FD-3636	E-3636	62.5mm 2.5 inches
FD-5427	E-5427	62.5mm 2.5 inches
FD-5436	E-5436	62.5mm 2.5 inches
FD-5454	E-5454	125mm 5 inches

COUPLING FLANGE (For Joining Boxes)



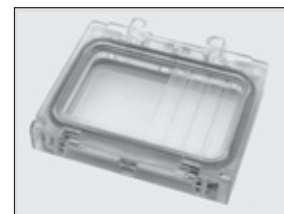
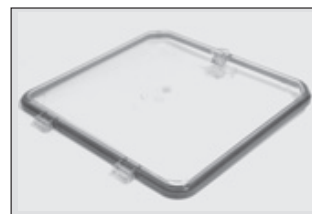
Part #	Size			For Opening	
	A	B	C		
CP-13	mm in	95 3.7	82 3.2	15 .6	13
CP-18	mm in	133 5.2	105 4.1	17 .7	18
CP-27	mm in	223 8.8	105 4.1	17 .7	27
CP-36	mm in	313 12.3	105 4.1	17 .7	36

END COVERS (Gland Plate)



Part #	Size			For Opening	
	A	B	C		
EC-13	mm in	95 3.7	82 3.2	12.5 .5	13
EC-18	mm in	133 5.2	105 4.1	12.5 .5	18
EC-27	mm in	223 8.8	105 4.1	12.5 .5	27
EC-36	mm in	313 12.3	105 4.1	12.5 .5	36

INSPECTION COVER - Transparent Cover mounted on hinge frame Style for TR 24 & TR 312 & TR 317



Part		Size	
		H	W
TR4	mm in	95 3.7	78 3.1
TR5	mm in	129 5.1	78 3.1
TR8	mm in	163 6.4	78 3.1
TR10	mm in	200 7.9	78 3.1
TR24	mm in	200 7.9	250 10
TR312	mm in	235 9.2	248 9.7
TR317	mm in	325 12.8	248 9.7