



NEMA/EEMAC Type 4, 4X Combiester Series Accessories

LOCKING SCREWS TO FIX COVERS



SLOTTED HEAD SCREWS
SD 13 - For type L & LO (4 per pack).
SD 18/4 - (4 per pack)
SD 18/6 - (6 per pack)



For all the enclosures except type L & LO.

(All Enclosures come complete with SD13 or SD18 Screws)
(These are for replacement use)

MANUAL - THUMB SCREWS



HS18 - For all the enclosures except type L & LO. (1 per package)



TS18 - 1 Triangular head metal screw
PTT-O - 1 Triangular head non-metallic screw
For all enclosures except E1813, E2713 & E2718LO

LLT - Key must be ordered separately

TRIANGULAR KEY



LLT - For triangular - head screws.

LOCK & HINGE KITS



CLL - Kit contains 2 hinges & the lock set.

FLEXIBLE HINGE SCREWS

Flexible hinge. Each have a flexible cord which functions as a hinge & holds the cover to the box when it is opened.



HSD18
Slotted head screw



HHS 18
Manual thumb screw
(1 unit per package)

The HSD 18 & HHS 18 are for use on all enclosures except type L & LO.

WALL MOUNTING BRACKETS



SUPPLIED 4 PER SET

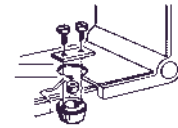
CB 13 - Chromium Plated.
CB-13IN - 304 stainless steel.
For E1813L & LO & E2713L & LO enclosures.

CB 18 - Chromium Plated
CB 18IN - 304 Stainless Steel.
Not for use with E1813L & LO & E2713L & LO enclosures.

DRAIN VALVE



DP - Used for draining condensation.

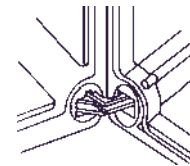


VENTILATION VALVE



DV - Allows air circulation inside the box to prevent condensation. Suitable for all boxes. Hole \varnothing 19 mm.

INTERNAL HINGE



KI - (1 Per Package)
(For all enclosures except type L & LO.)
(Must order Loctite Cement for bonding)
USE LOCTITE 495 CEMENT
to Bond Hinge to Enclosure.

EXTERNAL HINGE



KE - RIGID HINGE
(2 hinges per package.)



KK - JOINT HINGE
Not for use with type L & LO, or enclosures with depth flanges.
(2 hinges per package.)