

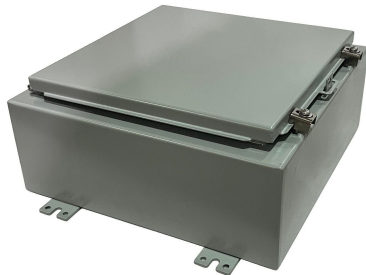


**Ralston**  
Metal Products Limited

**You create the need.  
We customize the solution.**

## Wall Mount Single Door

---



Water & Dust Tight Single Door Powder Painted Enclosure

### Application

Ralston's N4X single door enclosures are applied indoors and outdoors to house such items as: electronic and electrical controls, instrumentation systems, pneumatic, hydraulic, and machine tool controls.



These enclosures are designed to provide protection against dust, dirt, oil, and water. They are for use in areas such as dairies and breweries where they are subject to frequent high pressure hosing and generally wet conditions. (Not submersible)

### Construction

All N4X enclosures are made from 14 ga. hot rolled steel and have continuously welded seams ground to a smooth finish. The N4X enclosure has a folded lip around the door opening to provide complete and maximum gasket contact, and to prevent liquids from dripping into the enclosure when the door is open.

Each enclosure comes complete with a removable 12 ga. back panel mounted on 3/8 collar stud, 1/4-20 grounding studs, and four wall mounting back brackets.

Each enclosure door is equipped with neoprene gasket, a removable print pocket, padlocking hasp, 1/4-20 grounding studs, and stainless steel door clamping hardware on three sides. The door is easily removed by pulling the pin on the continuous stainless steel piano hinge.

### Paint Finish

All enclosures are phosphatized and finished inside and out with ANSI /ASA 61 grey polyester powder coating. Inner back panels are painted with high gloss white powder coatings.

#### Standards

N4X enclosures are built to the requirements of NEMA type 12 specifications for use with industrial control equipment in ordinary locations, type 13 for an oil and dust tight enclosure, and type 4,4X as a water tight corrosion resistant enclosure.

#### Special Orders

Custom units made from stainless steel or with special finishes, sizes or punching can be supplied on order.

N4X enclosures are CSA certified (File #LR 23608) and UL 508 listed (File #E136838) as a type 4,4X enclosure.

<b>Part Number</b>	<b>Height</b>	<b>Width</b>	<b>Depth</b>	<b>Weight</b>
N4X-161206	16 in	12 in	6 in	22 lbs
N4X-161606	16 in	16 in	6 in	26 lbs
N4X-201606	20 in	16 in	6 in	32 lbs
N4X-202006	20 in	20 in	6 in	37 lbs
N4X-242006	24 in	20 in	6 in	42 lbs
N4X-242406	24 in	24 in	6 in	48 lbs
N4X-161208	16 in	12 in	8 in	25 lbs
N4X-201608	20 in	16 in	8 in	35 lbs
N4X-202008	20 in	20 in	8 in	41 lbs
N4X-242008	24 in	20 in	8 in	46 lbs
N4X-242408	24 in	24 in	8 in	52 lbs
N4X-302408	30 in	24 in	8 in	66 lbs
N4X-303008	30 in	30 in	8 in	77 lbs
N4X-362408	36 in	24 in	8 in	74 lbs
N4X-363008	36 in	30 in	8 in	82 lbs

N4X-423608	42 in	36 in	8 in	114 lbs
N4X-242010	24 in	20 in	10 in	50 lbs
N4X-302410	30 in	24 in	10 in	62 lbs
N4X-362410	36 in	24 in	10 in	78 lbs
N4X-423010	42 in	30 in	10 in	108 lbs
N4X-302412	30 in	24 in	12 in	72 lbs
N4X-363012	36 in	30 in	12 in	99 lbs
N4X-423612	42 in	36 in	12 in	128 lbs
N4X-483612	48 in	36 in	12 in	146 lbs
N4X-603616	60 in	36 in	16 in	190 lbs