



# NEMA Type 1 19" Data & Telecom Accessories



**REAR 19"  
MOUNTING ANGLES**

For installation of 19" components in rear of enclosure  
1 pair with mounting material per package.  
(Enclosure comes with 2 front 19" angles).

Part No.	Height U
ELC-1202	12
ELC-1502	15
ELC-1802	18



**19" PANEL WITH 5 GUIDING CLIPS**

One unit high panel. For horizontal routing of patch cables.  
With 5 guides (70mm). 1 unit per package.

Part No.	Description
EMC-01	19" panel with 5 guiding clips



**SOLID GLAND PLATE**

Replacement gland plate.  
1 per package.

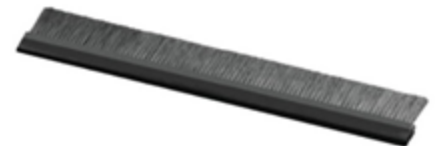
Part No	Description
EGP-01	Replacement gland plate



**CABLE SUPPORT RAIL**

For fastening of cables in width or depth.  
1 per pack with mounting material.

Part No.	Description
ECS-01	Cable support rail



**CABLE BRUSH**

Cable brush which can be fitted into the knock-out gland openings of the EIBox range. Can be mounted in top, bottom or back. 1 unit per package.

Part No.	Description
EGG-10	Cable Brush

**GLAND PLATE WITH TWO FANS**

Air flow 29 CFM per free blowing  
Mounted with gland plate in EIBox 20.6 CMF per fan.

Part No.	Description
EGPV-02	220 Volt Fans