



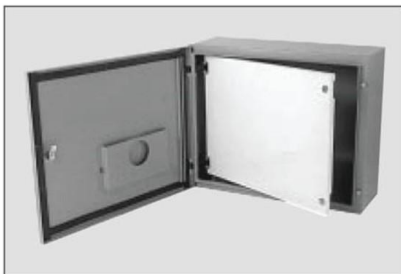
Replacement Inner Panels

For N4X, N12, N12-SQD, and Vision Series



Part No.	For Enclosure	Panel Size	
		H	W
V-1212	12 x 12	9	9
V-1612	16 x 12	13	9
V-1616	16 x 16	13	13
V-2016	16 x 20 20 x 16	17	13
V-2020	20 x 20	17	17
V-2412	24 x 12	24	12
V-2416	24 x 16	21	13
V-2420	20 x 24 24 x 20	21	17
V-2424	24 x 24	21	21
V-3020	30 x 20	27	17
V-3024	24 x 30 30 x 24	27	21
V-3030	30 x 30	27	27
V-3624	36 x 24	33	21
V-3630	36 x 30	33	27
V-3636	36 x 36	33	33
V-4224	42 x 24	42	24
V-4230	42 x 30	39	27
V-4236	42 x 36	39	33
V-4824	48 x 24	45	21
V-4830	48 x 30	48	30
V-4836	48 x 36	45	33
V-6024	60 x 24	57	21
V-6036	60 x 36	57	33

**Replacement IB Series
Inner Panels**



For Enclosure	Material	
	Steel	Aluminum
6 x 4	SP-0604	-
6 x 6	SP-0606	AP-0606
8 x 6	SP-0806	AP-0806
8 x 8	SP-0808	AP-0808
10 x 8	SP-1008	AP-1008
10 x 10	SP-1010	-
12 x 6	SP-1206	-
12 x 10	SP-1210	AP-1210
12 x 12	SP-1212	-
14 x 8	SP-1408	-
14 x 12	SP-1412	AP-1412
16 x 10	SP-1610	-
16 x 14	SP-1614	AP-1614

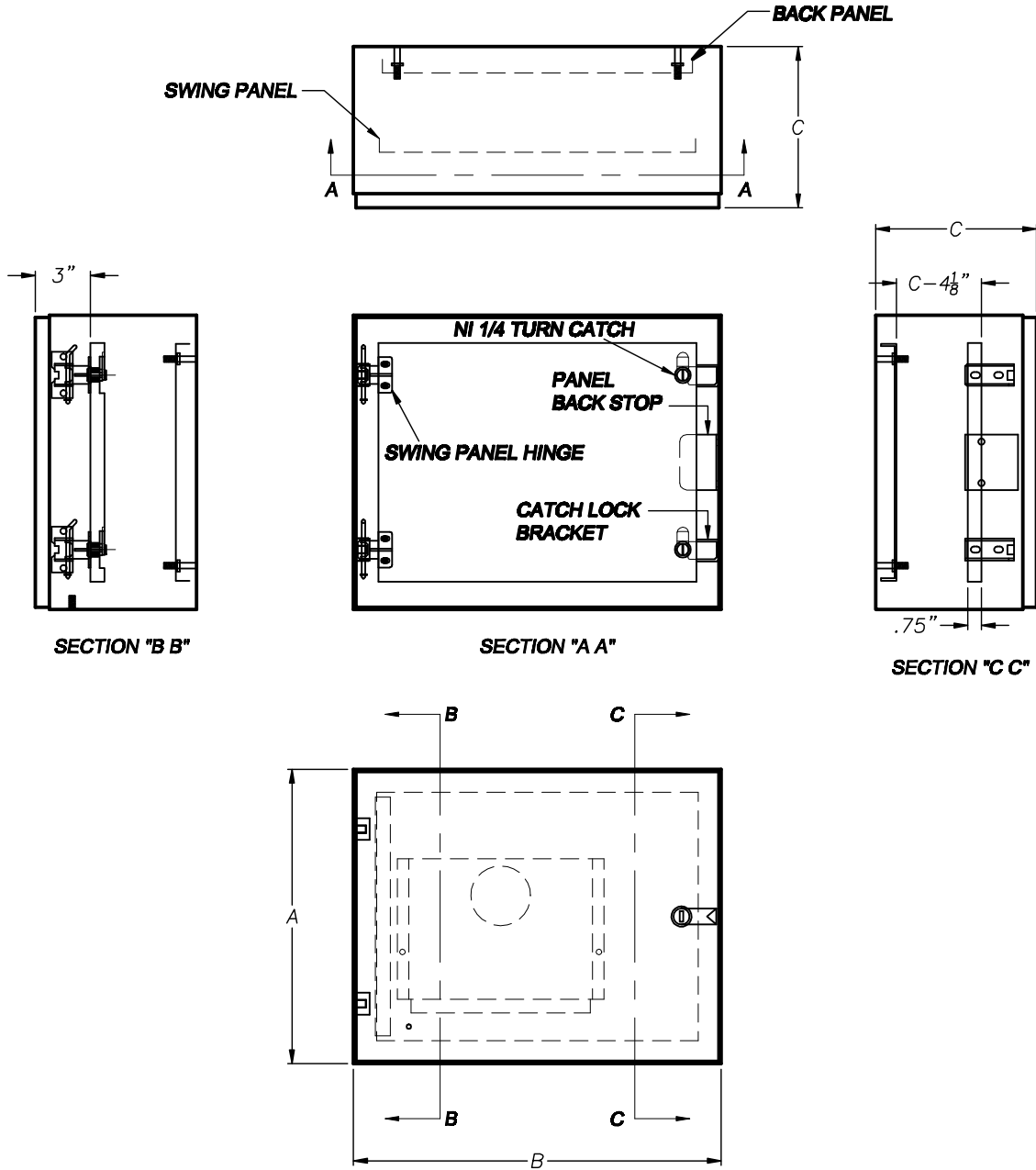
(Note: The IB Series comes complete with a steel inner panel)

Swing Panels

For VGP and VGW Series

Part No.	Panel Size		For Enclosure	Wt (lbs)
	H	W		
V-SP-1212	9	9	12 x 12	2.3
V-SP-1612	13	9	16 x 12	4.1
V-SP-1616	13	13	16 x 16	6
V-SP-1620	13	17	16 x 20	7.9
V-SP-2016	17	13	20 x 16	7.8
V-SP-2020	17	17	20 x 20	10.4
V-SP-2024	17	21	20 x 24	8.8
V-SP-2416	21	13	24 x 16	9.3
V-SP-2420	21	17	24 x 20	8.8
V-SP-2424	21	21	24 x 24	15.3
V-SP-2430	21	27	24 x 30	19.2
V-SP-3020	27	17	30 x 20	16
V-SP-3024	27	21	30 x 24	19.8
V-SP-3030	27	27	30 x 30	24.2
V-SP-2624	33	21	36 x 24	23.8
V-SP-3630	33	27	36 x 30	30.2
V-SP-3636	33	33	36 x 36	36.2
V-SP-4230	39	27	42 x 30	34.3
V-SP-4236	39	33	42 x 36	42.4
V-SP-4824	45	21	48 x 24	30.7
V-SP-4836	45	33	48 x 36	50

Note: "C" dimension = enclosure depth + $\frac{7}{8}$ "



DESCRIPTION:			
CATALOGUE DRAWING			
PART NUMBER:			
SWING PANEL INSTALLED			
REV. #:	DRAWN BY:		
A	ANDY MILLER		
DATE DRAWN:	DATE ISSUED:	SIZE:	
18-NOVEMBER-03	XX-XXX-XX	A	

Ralston Metal Products Limited

Phone: (519) 836-2968
Fax: (519) 836-9763

Toll Free: (800) 265-7811
www.ralstonmetal.com